

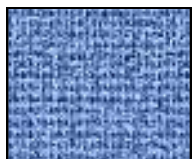
# Simple Block Assembly for Quilts

By Marlene Oaks

**It is important to keep your squares, and therefore your quilt, as square as possible.**

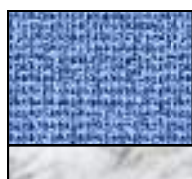
**Using sashing and cornerstones is one way to do this.**

**Here are the directions.**



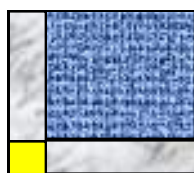
Once your blocks are made.

- First square them up to the closest size they all fit. Trim even if just a sliver trim.
- Cut sashing the exact length of the square—cut it anywhere from 1 1/2" to 2 1/2" wide depending on the effect you want. Use contrasting or complementing fabric.
- Cut cornerstone squares to be the width of the sashing, say 2 1/2" sq.

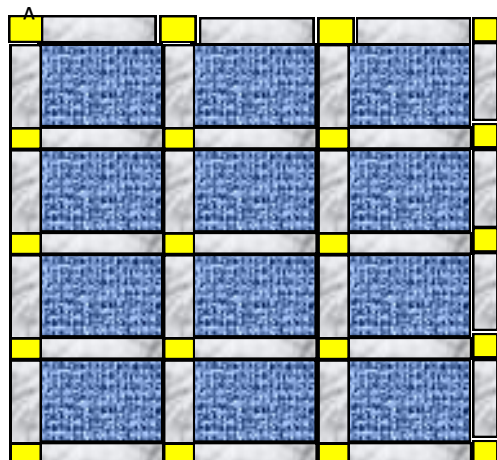


Sew the sashing on the bottom of all squares.

Sew a cornerstone on sashing pieces enough for one for each square. Plus extras for edges.



Sew sashing with cornerstone on each left side of the square plus the right side of the last row and the top of the first row.



Sew the squares with sashing and cornerstones together to make the size you want. Match the seams.

- ♦ To add a border, measure the length of the quilt in 3 different places and take an average.
- ♦ Cut 2 borders that size.
- ♦ Do the same with the width of the quilt, if no cornerstone, wait to measure until the side borders are attached to get the length of the top & bottom borders.
- ♦ For cornerstones in borders. Cut squares the width of the borders.

